



CRIOLLO LODGE

JAL, NEW MEXICO

EXECUTIVE LODGING IN THE PERMIAN BASIN

aramark

Lodge Life
Solutions



aramark

AMITY
LODGES

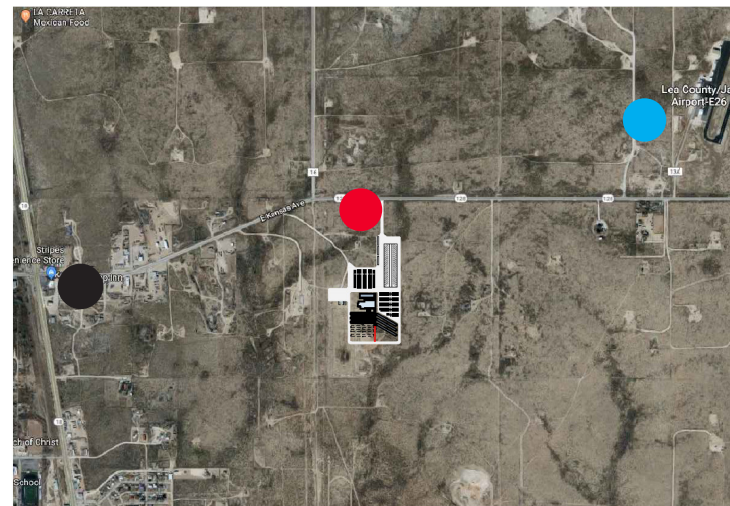
CRIOLLO LODGE

Criollo Lodge, located in Jal, New Mexico, is a collaborative undertaking between Amity Lodges and Aramark. We have planned and designed Criollo Lodge as a strategic project in response to a distinct lack of executive style lodging in the Permian Basin.

We envision Criollo Lodge to be:

- A contemporary lodge that sets the standards for hospitality excellence in the Delaware Basin.
- Supportive of a customized hospitality operating model, including an enhanced menu and services.
- A valuable recruitment tool. Its amenities and superior services will increase success in recruiting and retaining employees.
- A professional, state-of-the-art facility to meet any business requirements. With its customized design, commercial vehicle parking and proximity to the Jal airport coupled with Aramark's expertise in hospitality, the lodging facility will be the finest and most comfortable in the area.

We fully understand the importance of providing our guests with a true hospitality Lodge Life Solution and experience. Aramark, as a food service industry leader, has planned cutting-edge dining solutions for Criollo Lodge that are ontrend, nutritious, and high-quality. We call it hospitality. You'll call Criollo Lodge home.

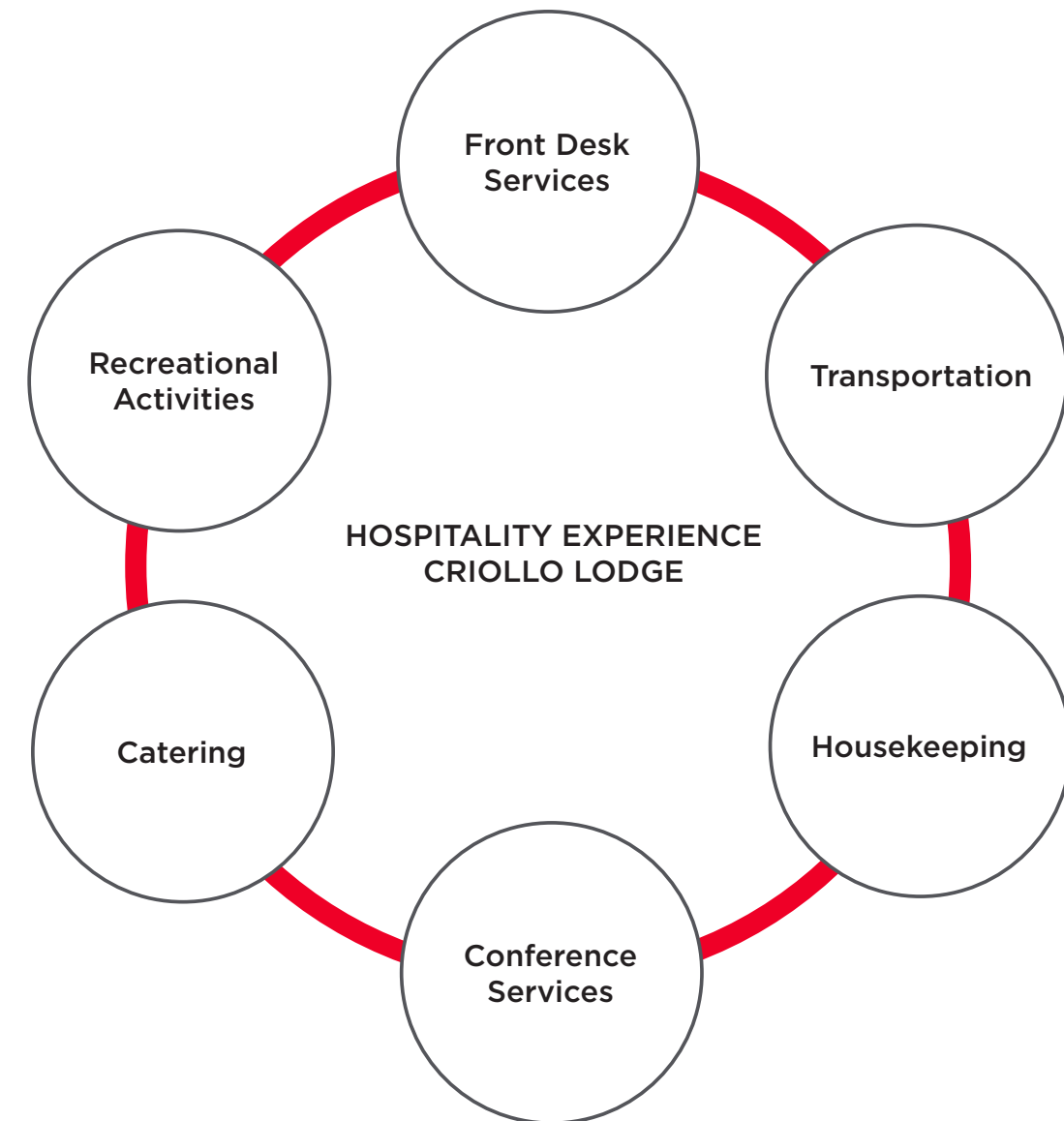


- City of Jal
- Criollo Lodge
- Jal Airport

HOSPITALITY EXPERIENCE

We are committed to bringing our guests at Criollo Lodge the best in hospitality. From dining to recreation to housekeeping, we guarantee the highest-quality experience.

Aramark's innovative Lodge Life Solution model will assist companies in recruiting and retaining key employees.

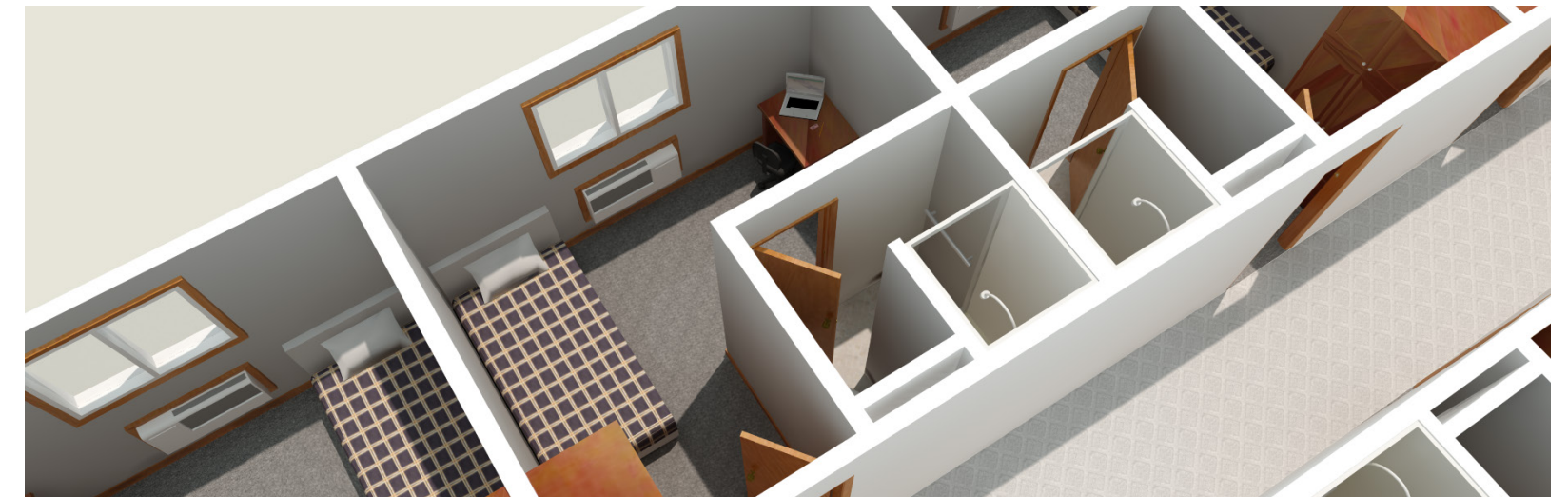
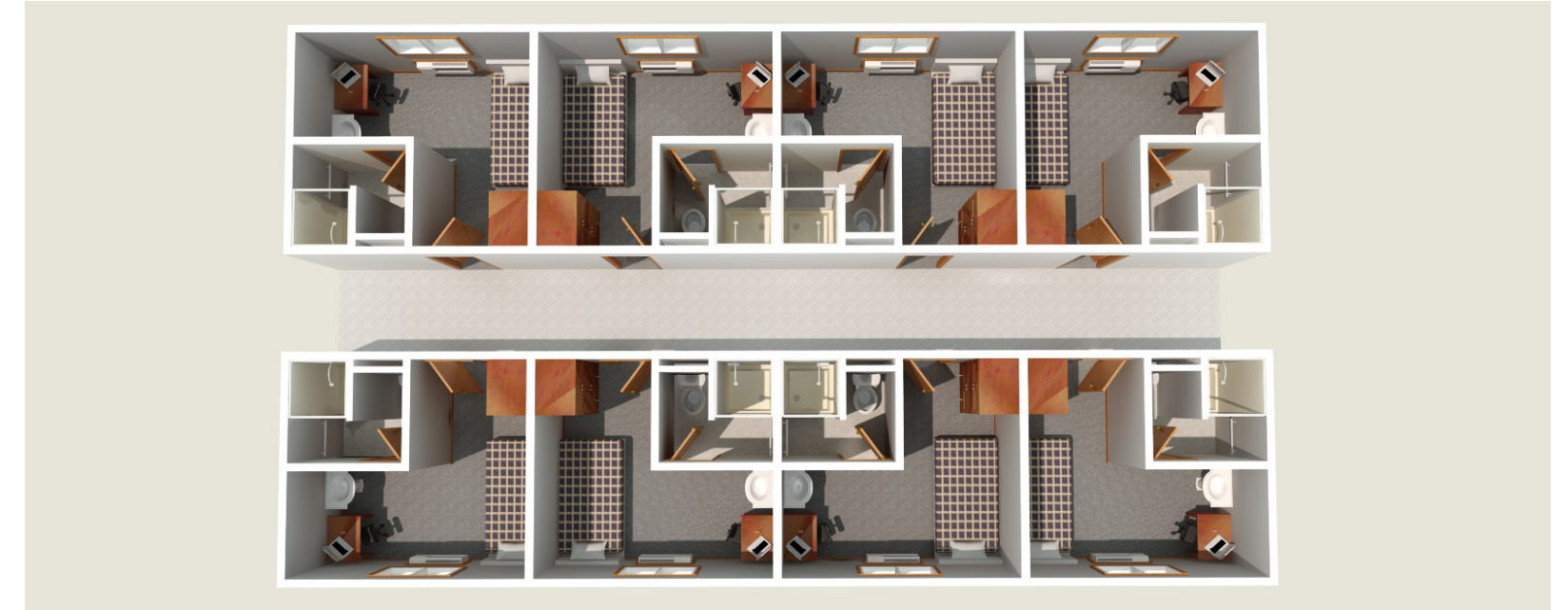
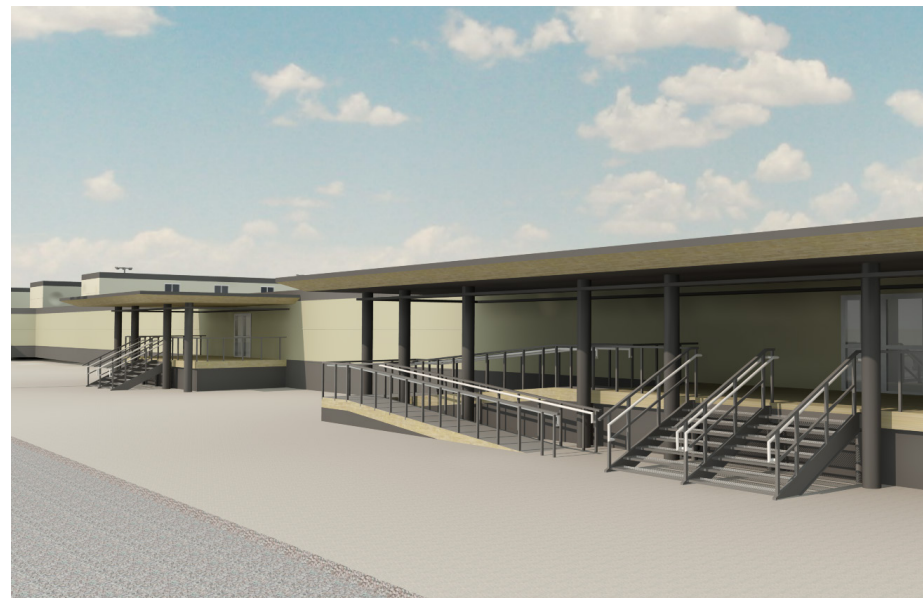
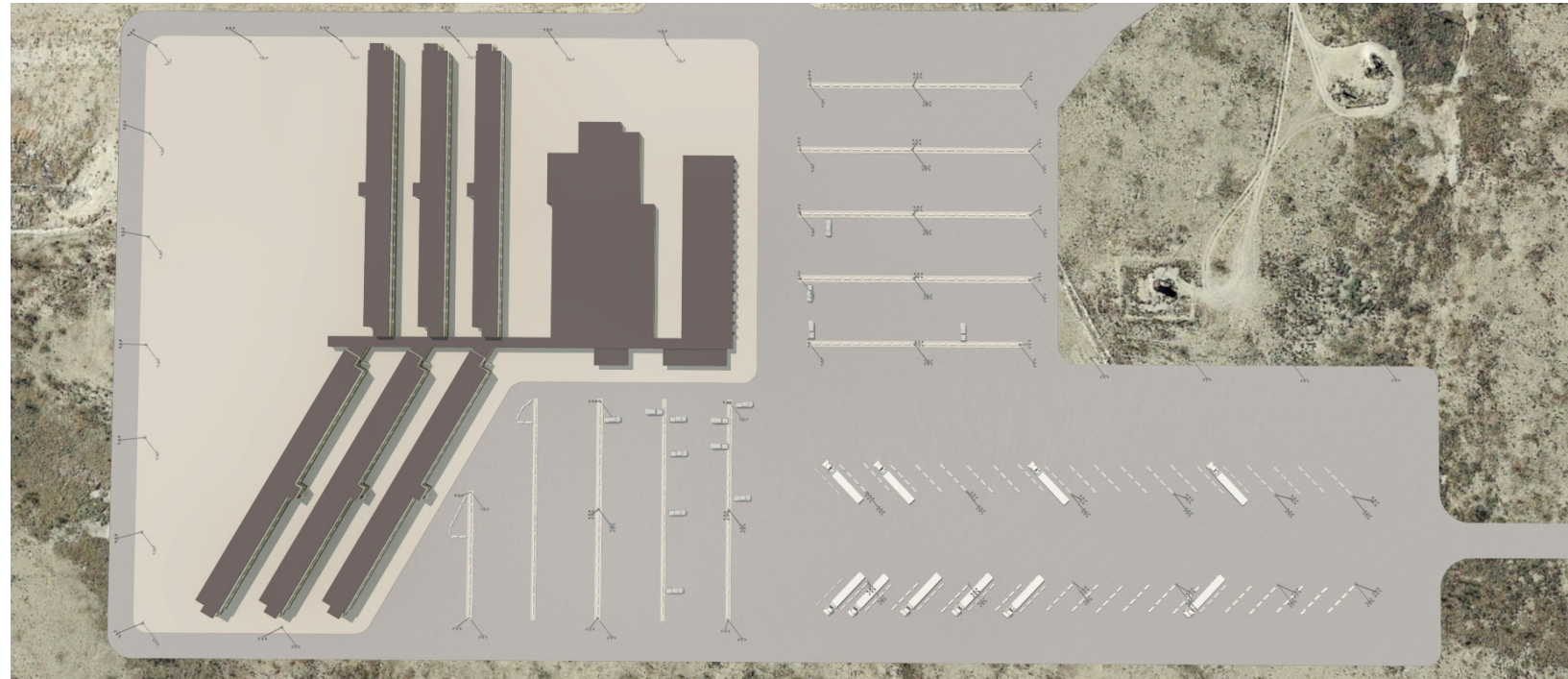




COME EXPERIENCE THE HOSPITALITY



CRIOLLO LODGE—558 ROOMS



AMENITIES AND ROOMS

LODGE AMENITIES

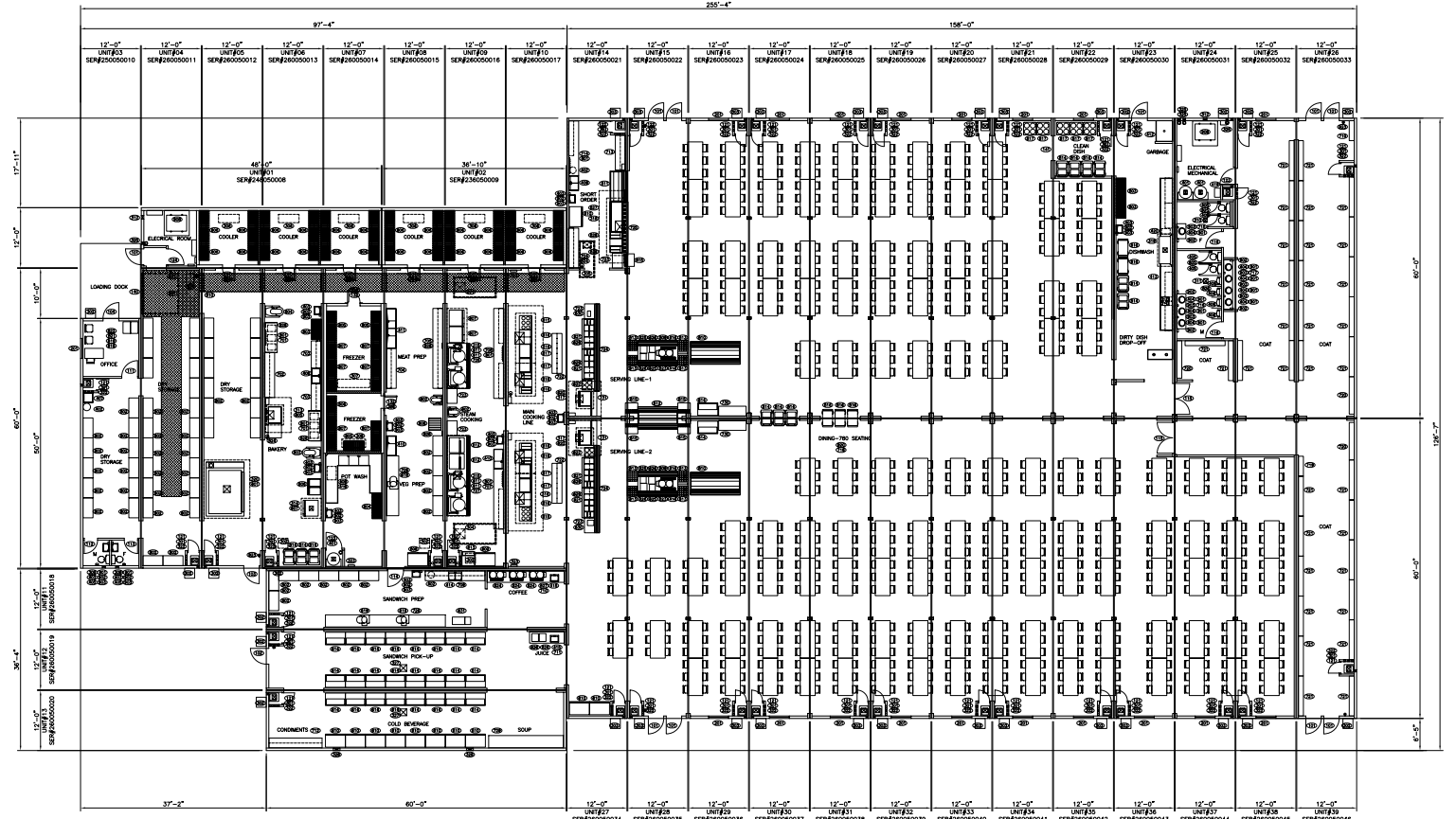
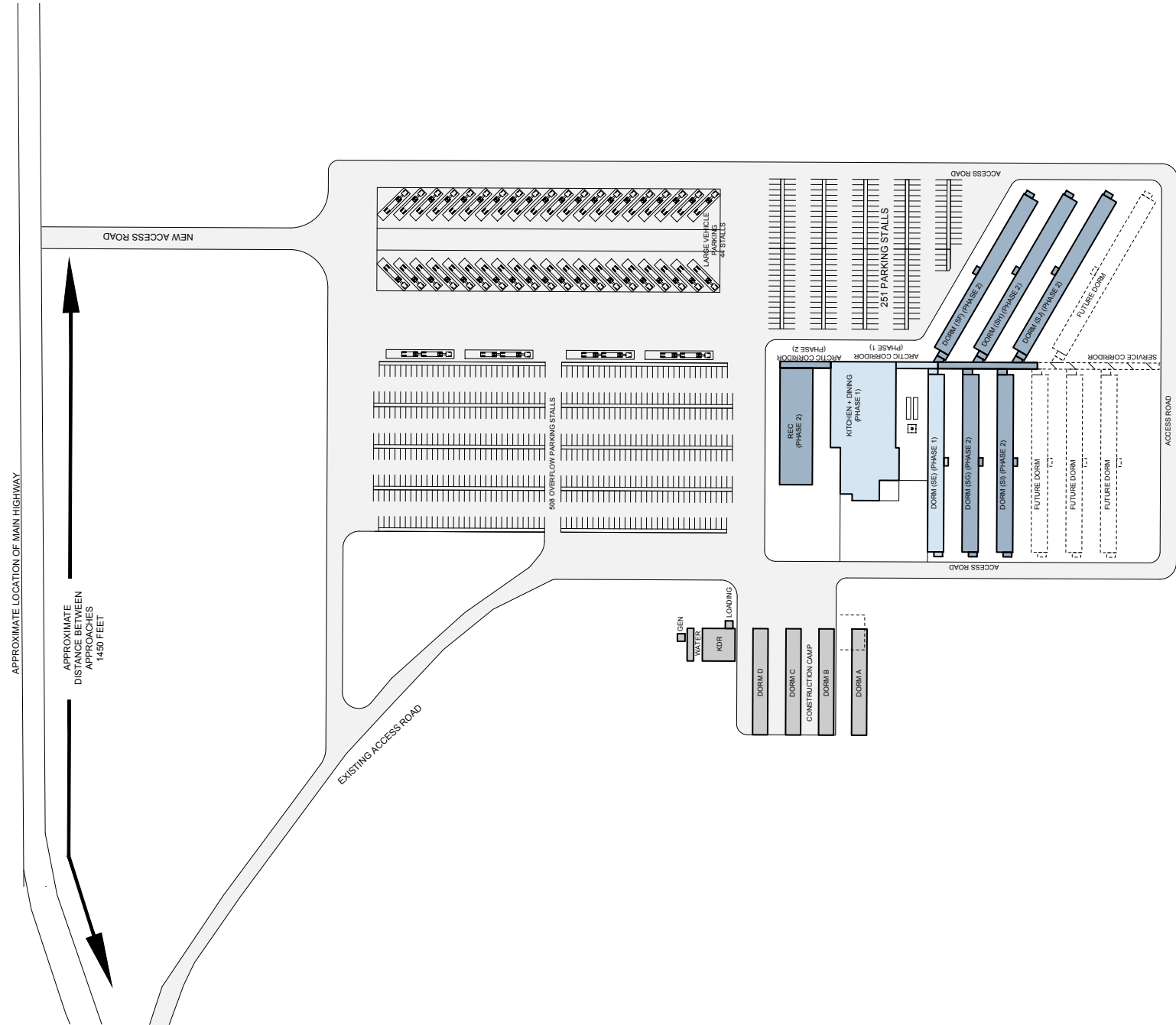
- Gym (Recreation Coordinator)
- 24 hour kitchen
- Orientation Room
- Movie Theatre / Games Rooms
- Offices for rent
- Commercial vehicle parking for rent
- 24 hour security
- Public Restaurant - 2,000 seat capacity
- BBQ Pit / Picnic Area
- Proximity to airport (Shuttle service TBD)
- Full commissary
- Ice machines
- (2) Laundry facilities in each dorm
- Bus Transportation for work crews (TBD)
- Rig Box Meal Delivery (TBD)

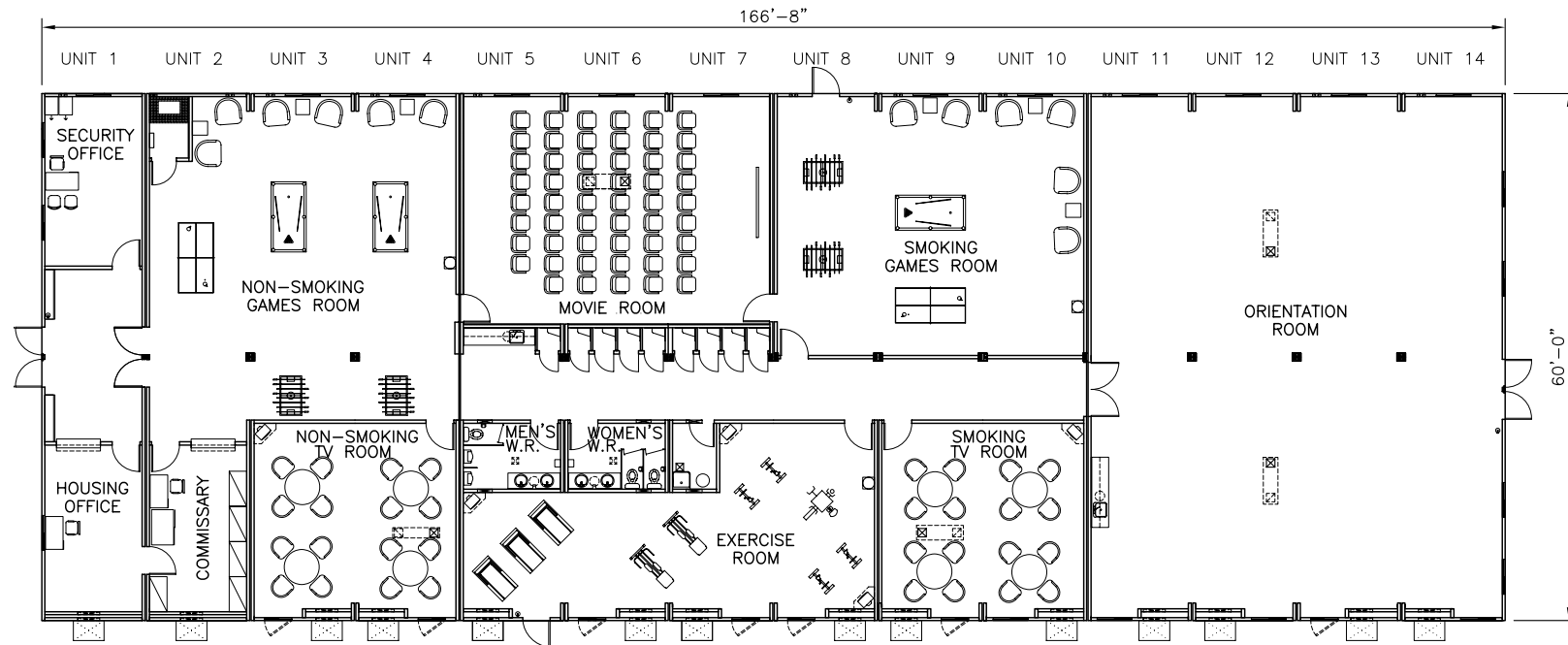
INCLUDED IN EACH ROOM

- Room size (160 sqft)
- Bed type (full)
- Individual in room A/C and heating
- Private Washroom
- Wifi
- Cable TV



LAYOUTS





ARAMARK DELIVERS EXPERIENCES THAT ENRICH AND NOURISH PEOPLE'S LIVES...

Through innovative services in food, facilities management, and uniforms. We provide award-winning services to healthcare institutions, universities and school districts, stadiums, remote workplaces, and business in 19 countries around the world.

As a leader in a large, growing market, we proudly serve our clients through high-quality service and innovation to meet their evolving needs. With safety, quality, and service excellence as core values that define the company, we are also committed to responsibly addressing issues that matter to our clients, customers, employees, shareholders, and communities by focusing on employee advocacy, environmental stewardship, health and wellness, and community involvement.

Since 1998, we have been consistently recognized among the World's Most Admired Companies by FORTUNE magazine.

OUR MISSION

DELIVER EXPERIENCES THAT ENRICH AND NOURISH LIVES.

OUR VALUES

SELL AND SERVE WITH PASSION
 FRONT LINE FIRST
 SET GOALS. ACT. WIN.
 INTEGRITY AND RESPECT ALWAYS



TO: Aramark Remote
RE: Criollo Lodge

COMMITMENT LETTER

On behalf of _____, please accept this letter as our commitment to participate in the Criollo Lodge:

- 1) Estimated number of rooms: _____
- 2) Desired commencement date for rooms: _____
- 3) Term of commitment for rooms: _____

This letter is intended primarily to establish a basis for future use regarding Criollo Lodge. This letter constitutes a non-binding commitment by our company to rent rooms subject to the completion of Criollo Lodge and finalization of a contract. All terms and conditions regarding Criollo Lodge and the relationship between _____ and Aramark in this regard are subject to the final agreement between the parties. Should you have any questions, please contact the undersigned.

Sincerely,

Company Representative

Date: _____

ATTENTION: Aramark Remote

Kristian Harold
Director, Business Development
Email: harold-kristian@aramark.ca



©2019 Aramark. All Rights Reserved.